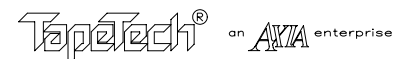
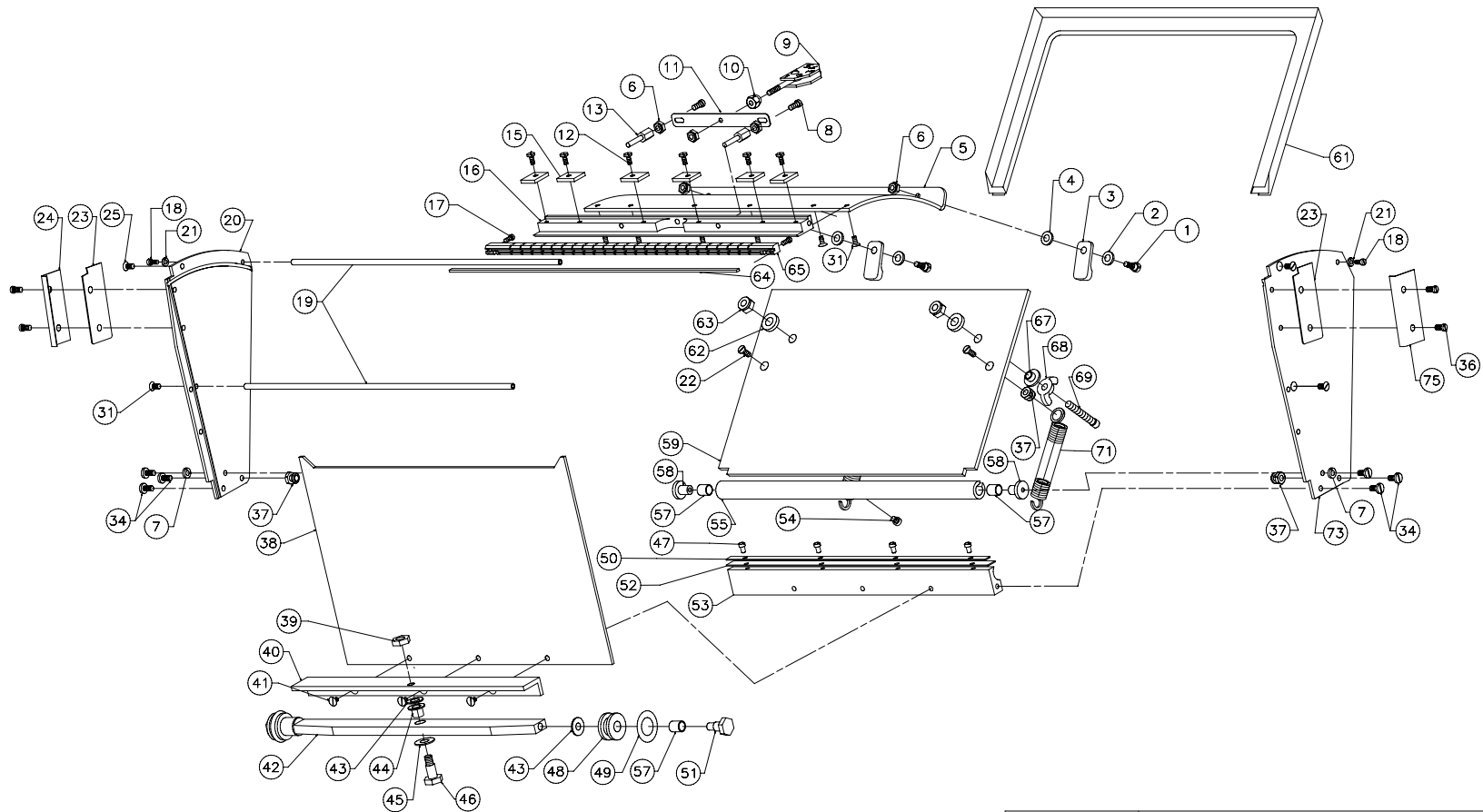



ref. No.	Part No.	Description	Qty.	ref. No.	Part No.	Description	Qty.
01	210059	Shoulder Screw	2	42	280045G	Axle	1
02	219064	Spring Washer	2	43	209042	Washer	3
03	210058F	Latch	2	44	209047	Flanged Nyliner	1
04	489023	Washer	2	45	809006	Washer	1
05	260032G	Radius Plate	1	46	202036	Shoulder Screw	1
06	059018	StopNut, 6-32, SST.	5	47	889030	4-40 x 3/16 Fillister Hd Screw	4
07	059016	Lockwasher, #6	2	48	310051F	Wheel	2
08	219080	Screw, 6-32 x 5/8 Fil. Hd. SST.	2	49	219067	'O' Ring, 0.875 ø x 0.210 Thick.	2
09	206003	Dial Assy.	1	50	260097	10" Seal Plate	1
10	202021	Special Nut	1	51	200052F	Shoulder Screw	2
11	203010	Crown Spring	1	52	260096	10" Seal	1
12	209016	Screw, 4-40 x 7/32 Bd. Hd.	6	53	280050G	Pivot Retainer	1
13	210007	Push Rod	2	54	059051	Screw, 6-32 x 3/16 Fil. Hd. SST.	1
14				55	260009G	Pivot Axle	1
15	210057	Blade Holder Clip	6	56			
16	260005G	Blade Holder Support	1	57	209148	Nyliner Bearing	4
17	209012	Screw, 4-40 x 1/4 Fil. Hd. SST.	2	58	210060	Pivot Bearing	2
18	059161	Screw, 4-40 X 3/8 Fil. Hd SST.	2	59	260027G	Pressure Plate	1
19	260071	Spacer Rod	2	60			
20	270023G	Side Plate, Right, No-Logo	1	61	260024F	Wiper	1
21	059038	Lockwasher, #4	2	62	209046	Special Washer	2
22	059107	Screw, 6-32 x 1/4. Fl. Hd. SST.	2	63	209017	Nut, 10-24 SST.	2
23	212022	Repair Clip	2	64	250001	Blade	1
24	219039	Skid	1	65	270002	Blade Holder	1
25	219081	Screw, 6-32 x 7/16 Fl.Hd., SST.	2	66			
26				67	202028	Threaded Washer	2
27				68	209030	Wing Nut, 10-24	2
28				69	339073	10-24 x 1 1/4 SI Fillister Hd Sc	2
29				70			
30				71	202044F	Spring	2
31	059102	Screw, 4-40 x 1/4 Fl. Hd. SST.	8	72			
32				73	266025G	Side Plate, Left, No-Logo	1
33				74	123421	Label	1
34	059020	Screw, 6-32 x 3/8 Bd. Hd. SST.	6	75	219006	Skid	1
35							
36	059015	Screw, 6-32 X 1/4 Fil. Hd. SST.	4				
37	202020	Spring Anchor	4				
38	260031G	Bottom Plate	1				
39	059225	Nut, 10-32 Elas., Thin Pat.	1				
40	260033G	Axle Support	1				
41	059029	Screw, 6-32 x 5/8 Fl. Hd. SST.	3				

REVISIONS				
ECN	REV	DESCRIPTION	DATE	BY
975	A	RELEASED	09/98	MWJ
1045	B	CHANGE ITEMS SHOWN, ADD LABEL	05/00	HM
1140	C	CHANGE 260045G TO 280045G, ADD F SUFFIX	03/01	HM
1197	D	REPLACE BLADE, WHEELS AND RELATED HARDWARE	08/01	HM
1344	E	REPLACE 202043 WITH 339073	06/03	HM
1370	F	REP 260050G W/260050G ADD 260096,260097,889030	01/04	HM
1417,1419	G	REPLACE 059148 W/ 209148, 202010 W/ 203010	05/05	HM

BY	DATE	10" EZ Clean Box Assy			
DRAWN	09/99				
CHKD	05/05				
APPVD					
ALL DIMENSIONS IN INCHES UNLESS OTHERWISE NOTED TOLERANCES UNLESS NOTED XX ± 0.010 XXX ± 0.005 ANGLES ± 1/2'					
MATERIAL		SIZE	SCALE	DWG NO.	REV
		B		27TT	G
ASSEMBLY REF. NO.				SHEET	1 of 2



27	10" EZ CLEAN BOX ASSY	
	 an  enterprise	REV G